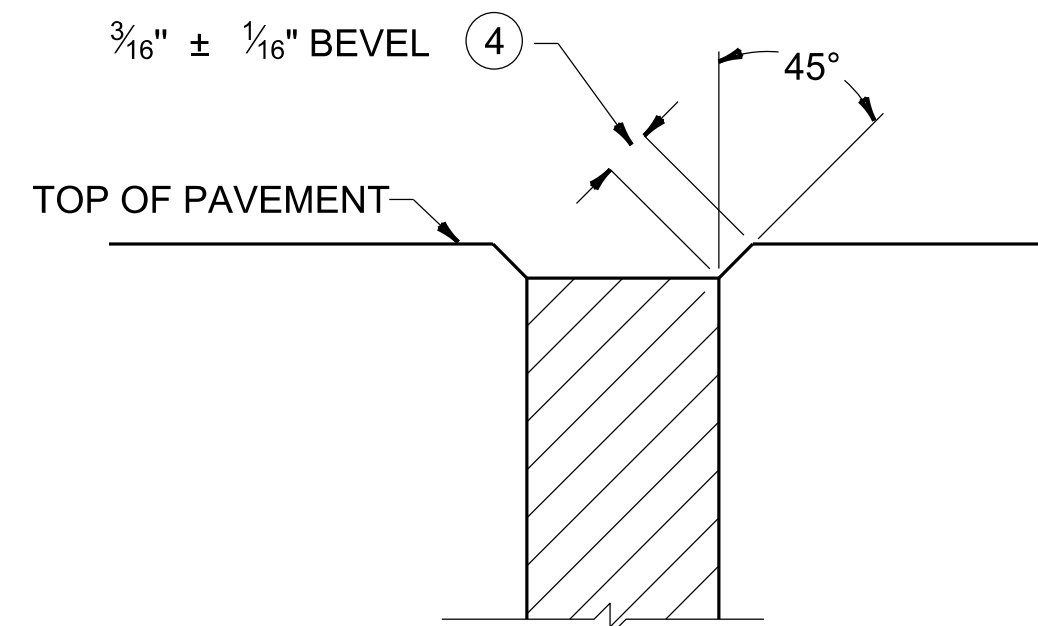
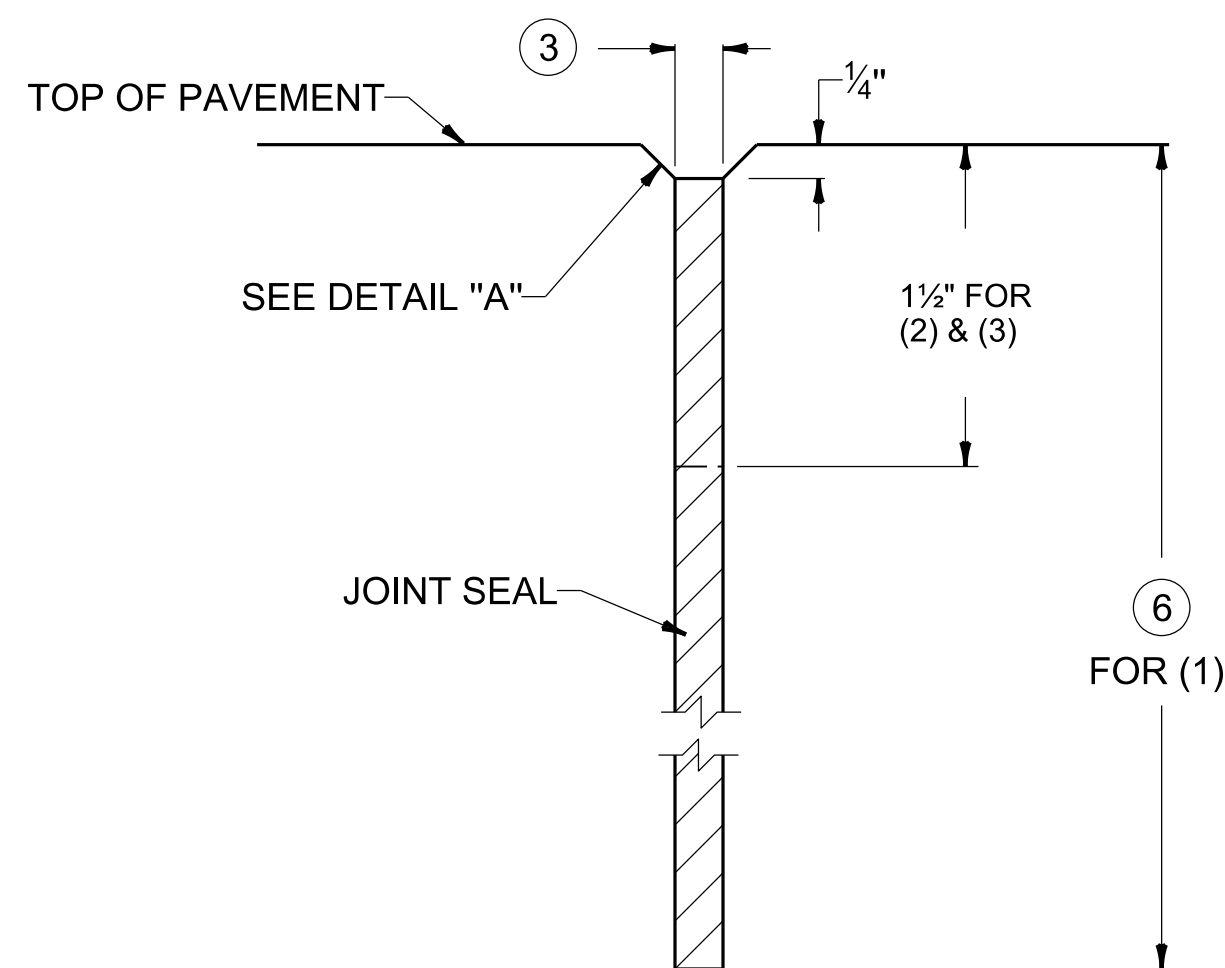


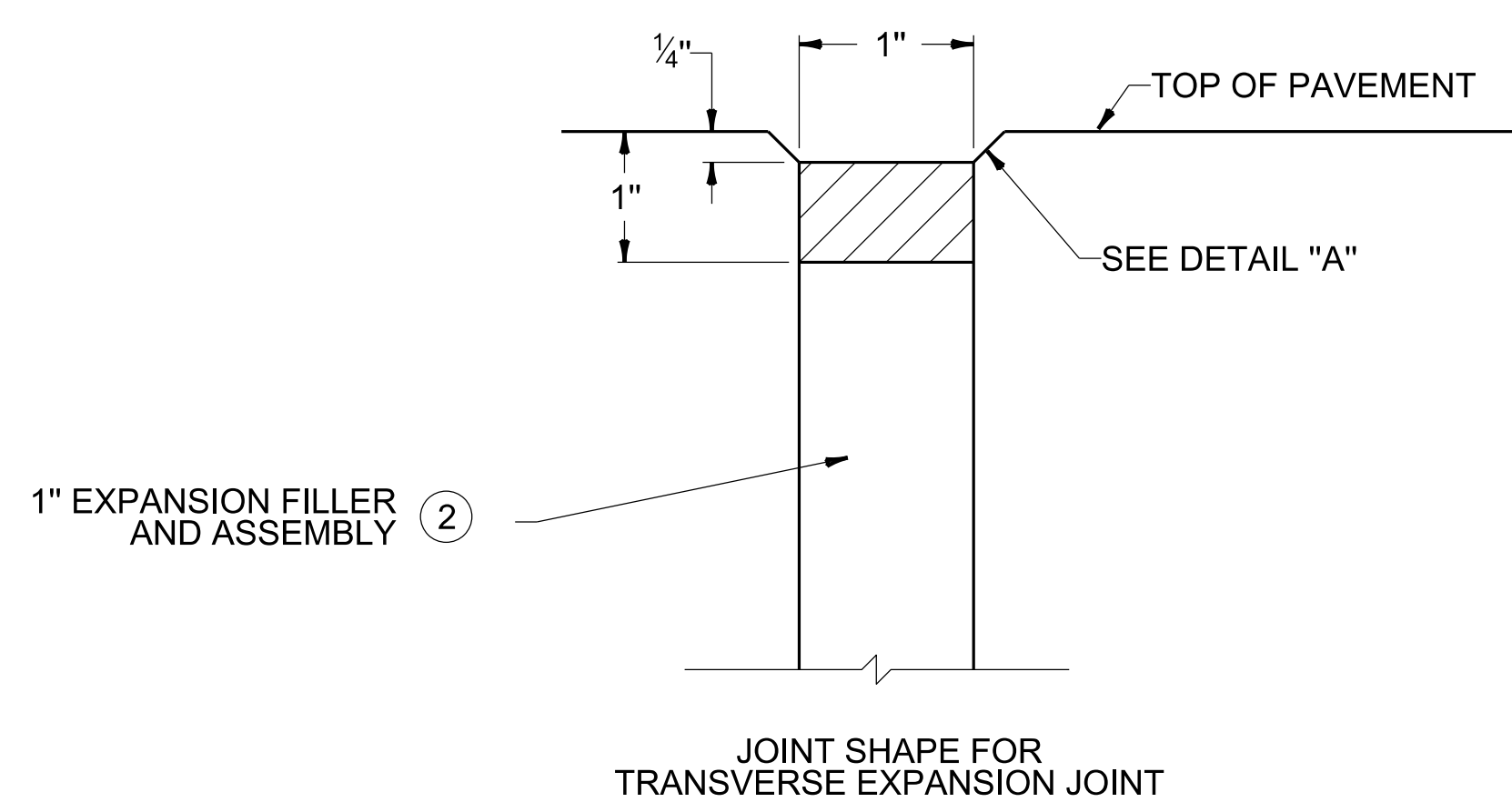
JOINT SHAPE FOR
TRANSVERSE SAWED CONTRACTION JOINT



DETAIL "A"



- (1) LONGITUDINAL SAWED JOINT (TIED)
(2) LONGITUDINAL SAWED CONSTRUCTION JOINT (TIED)
(3) TRANSVERSE SAWED CONSTRUCTION JOINT (TIED)



1" EXPANSION FILLER
AND ASSEMBLY

JOINT SHAPE FOR
TRANSVERSE EXPANSION JOINT

~ NOTES ~

1. PAYMENT FOR ALL WORK SHALL BE INCIDENTAL TO THE UNIT PRICE BID PER SQ. YD. OF PAVEMENT.
 2. THE REMAINING JOINT SHALL BE IN ACCORDANCE WITH CUR. STD. DWGS. RPS-010 AND RPS-020
 3. ALL LONGITUDINAL AND TRANSVERSE SAWED JOINTS SHALL BE CUT TO THE DEPTH SHOWN AND SHALL BE SEALED WITH HOT POURED ELASTIC JOINT SEAL.
 4. THESE EDGES SHALL BE BEVELED USING A CUTTING OR GRINDING DEVICE.
 5. 1/8" MIN. - 1/4" MAX.
 6. JOINT DEPTH IS T/3 OR 4", WHICHEVER IS LESS.
T = PAVEMENT THICKNESS
- USE WITH CUR. STD. DWGS.
RPS-010 RPS-020

REVISION DATE: 12/01/2015
REVISION NUMBER: 0

SUBMITTED 12-01-2015 DATE
DIVISION DIRECTOR
APPROVED 12-01-2015 DATE
STATE HIGHWAY ENGINEER

PAVEMENT



COMMONWEALTH OF KENTUCKY
DEPARTMENT OF HIGHWAYS



JOINTS

HOT-POURED ELASTIC JOINT SEALS FOR CONCRETE PAVEMENT

STANDARD DRAWING NUMBER
RPX-015-04